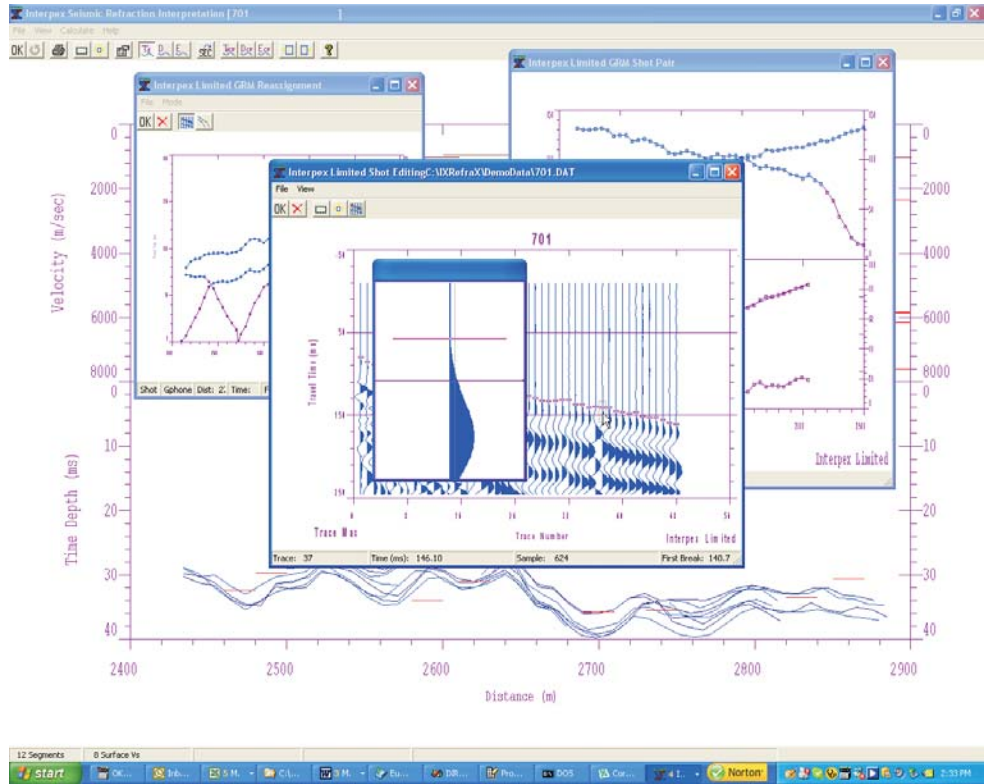


Quality Control:

- Click on velocity segment in GRM segment window (background) to bring up Velocity Analysis window (right intermediate)
- Right-click on a composite shot to bring up display of original travel time curves (left intermediate).
- Right-Click on individual travel time curve to bring up shot record for repicking (foreground center)
- Or use mouse to reassign layers on individual travel time curve.



Presentation Choices:

- Time-Depth, Depth or Elevation Section
- Error bars show uncertainty in result
- Velocity shown as graph or by color fill
- Arcs can be drawn showing first arrival wavefronts
- Color coding can be less than layer thickness
- Color Fill can be red to blue or blue to red

